

Beaver Updates

Issue 07: May 2026

Each month, Student and Family Engagement (SFE) shares a newsletter featuring a first-year student spotlight, along with community updates and upcoming events for first-year undergraduate students.

SFE Updates

YEAR 1 WRAPPED
2025 - 2026

TOP MOMENTS

FEATURED ARTISTS
(Favorite people)

NEXT YEAR'S PREVIEW
(Goals for next year and first steps to get there!)

BREAKOUT TRACK
(Unexpected wins or things you're proud of!)

RAFFLE

Event hosted by SFE x SWS
Follow SWS @caltechwellness

Join us as we wrap up the school year with a bit of reflection and introspection, paired with an açai bowl (60 available, first come, first served).



Come for:

- Reflecting on the memories of your first-year
- Celebrating your personal growth
- Prepping to power through finals
- Joining a raffle to win (3) productivity timers – just in time for finals!



Sweet treat and prizes are only for first-year UG students

Thursday, May 21, 12-1 PM
Outside Browne Dining/San Pasquel Walk

This event is cohosted by Student Wellness Services and SFE

Student Spotlight: Angela Liu



Hometown: Palo Alto, CA

Option: Applied & Computational Math

Favorite breakfast food: Yogurt parfait

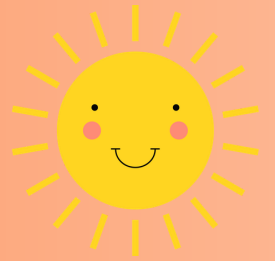
If you could travel anywhere: Live in the Swiss Alps for a month and adopt a goat

Favorite memories of your first-year at Caltech:

Watching Kip Thorne's confusion after his talk when a few first-years showed up with his face taped on, spraying defenseless Ven upperclassmen with a water gun, and living near Red Door so I can get meals between my meals

Beaver Updates

Issue 07: May 2026



STUDY ABROAD



- ✓ Applications open to sophomores and juniors
- ✓ First acceptable application deadline is January 25, 2027

LOCATIONS

- | | |
|---|--|
| University of Edinburgh
(Edinburgh, Scotland) | University College London
(London, England) |
| Danish Technological University
(Lyngby, Denmark) | University of Cambridge
(Cambridge, England) |
| University of Melbourne
(Melbourne, Australia) | École Polytechnique
(Palaiseau, France) |
| University of Chicago
(Chicago, USA) | |



Friendly reminder, if you open the PDF version of this newsletter (attached to the email), you can click on the embedded hyperlinks

CALTECH CONNECT

How do I help my friend who is in crisis?
What if they're suicidal? RSVP below.



THURSDAY, MAY 7TH, 7:00PM - 9:00PM
AT 269 DOWNS-LAURITSEN



Visit **Ion Caltech Today** for daily updates on campus events and news.



Caltech





Beaver Updates

Issue 07: May 2026

Center for Inclusion and Diversity – ccid2009@caltech.edu

Women in STEM Affinity Space | Thurs, May 7 at 4pm | CSS 2nd Floor Common Area

Before you end your day, join the CCID for arts, crafts, and snacks! You can make your own beaded coaster or engage in another craft activity. All are welcome!

Dia de Las Madres | Fri, May 8 at 9:30am | CSS Front Lawn

In various countries across Latin America, Dia de Las Madres is celebrated every year on May 10th as a tribute to Mothers. Join CCID as we celebrate and honor the mothers in our community! Take part in our flower bouquet making and selfie booth. Coffee and light breakfast will be provided while supplies last.



Celebration of Excellence | Thurs, May 21 at 5pm | Dabney Gardens

Our annual Celebration of Excellence is a few weeks away! For 18 years, the CCID has been honoring folks who have been advancing inclusion, diversity, equity, and accessibility on campus – from the lab to the Houses! If you know someone who will be awarded and honored at the event, we welcome you to celebrate them with us!

Student-Faculty Programs – sfp@caltech.edu

First-time SURF students are invited to participate in Cultivating Your Scientific Mind, a symposium and workshop series designed to introduce undergraduate students to the practice of research.

The symposium is on Sat, May 9 at 9:30 AM–1:30 PM. Breakfast and lunch will be provided. [RSVP here.](#)

Following the symposium, there will be ongoing summer workshops to help students explore what it means to think like a scientist, understand how research works, and prepare for upcoming research experience. **Summer Workshop Schedule:**

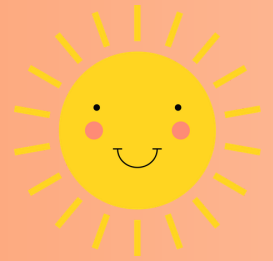
Boba and snacks will be provided.

- *Mentoring Up* — Monday, June 22 | 4:00 PM
- *The Art of Asking Questions* — Monday, June 29 | 4:00 PM
- *How to Read Scientific Papers* — Monday, July 6 | 4:00 PM
- *Building Resilience and Maintaining Motivation in Research* — Monday, July 13 | 4:00 PM



Beaver Updates

Issue 07: May 2026



.....

[Caltech Library - library@caltech.edu](mailto:library@caltech.edu)

Extended Library Weekend 24 Hours for Midterms at Sherman Fairchild Library



SFL extends its 24 hours during the first weekend of May for Spring midterms when the library closes on Friday, May 8 at 8:00pm. As always, warm drinks and snacks will be available overnight from 8:00pm to 8:00am starting Friday night, May 1 until Monday morning, May 4.

Finding US Maps Online - Thurs, May 14, 2-3pm | Zoom

Join our Geological & Planetary Sciences librarian as he highlights free geological and topographic maps for your geological science projects and course. Learn how to navigate these sites to find exactly what you are looking for.

TechHub Drop In: Craft Your Festival Bracelets (and other freebies) - Thurs, May 21, 11am-2pm | Caltech Hall TechHub



Get ready for a summer filled with concerts, festivals, and get togethers! Craft your own friendship bracelets or other freebies with the tools and materials provided by our TechHub makerspace. Drop-in anytime between 11:00am and 2:00pm.

.....

Caltech Y and Career Achievement, Leadership, and Exploration Professional Attire Thrift Day and FREE Headshots Fri, May 8 | 10 AM - 2 PM (For headshots, [RSVP here](#)) | Olive Walk

Hosted by CALE and the Caltech Y, there will be free clothes to refresh your wardrobe and pick out a new (to you) outfit, fit for your next internship, job, or interview. We'll have stylists nearby to help you look your very best. To guarantee a time slot for professional headshots, please RSVP. Walk-ins will be accepted as space allows.

